



PROJECT ATHENA

Augmenting Therapeutic Effectiveness through Novel Aalytics

Project ATHENA

Data Challenges and Opportunities

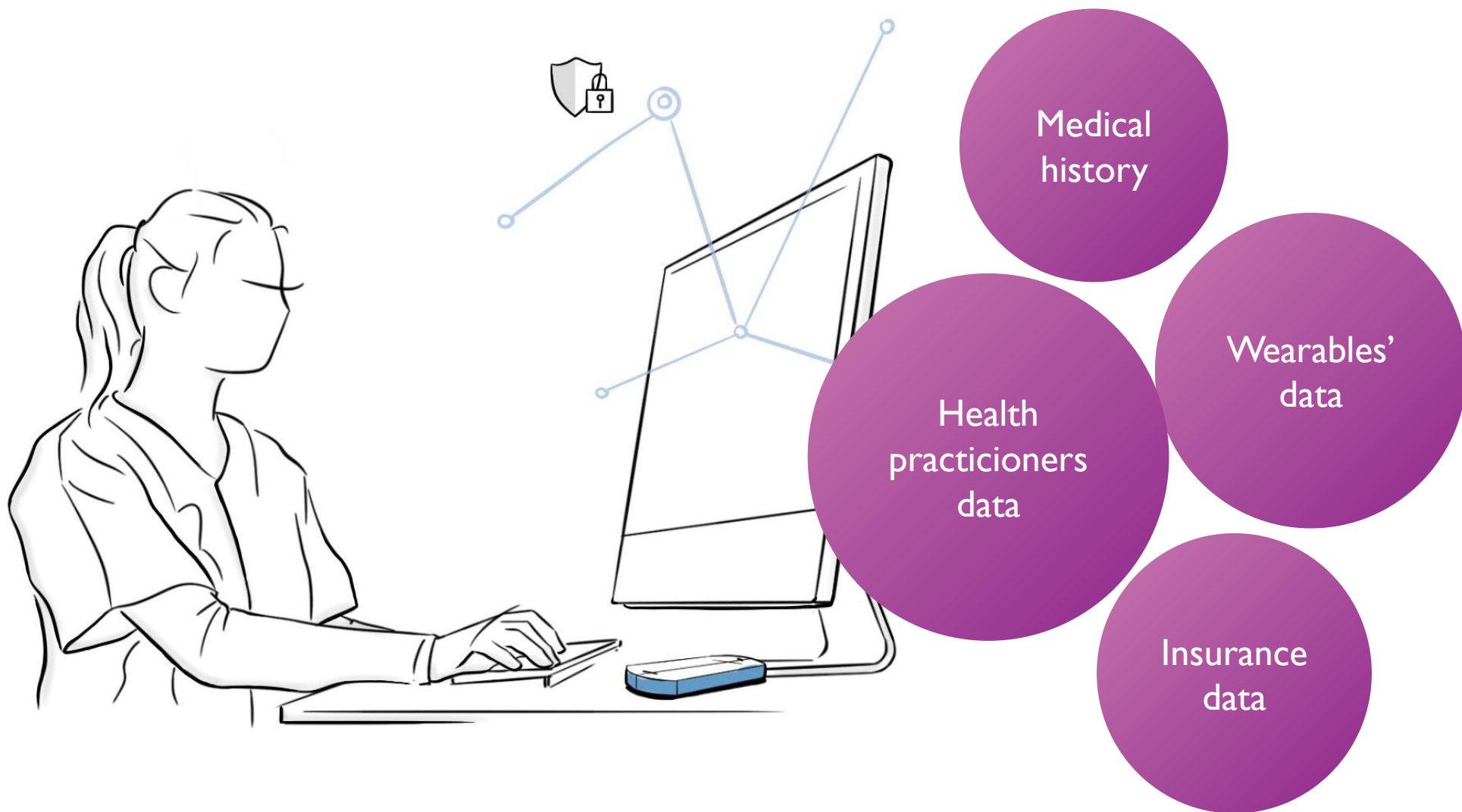
November 23, 2023

AGENTSCHAP
INNOVEREN &
ONDERNEMEN

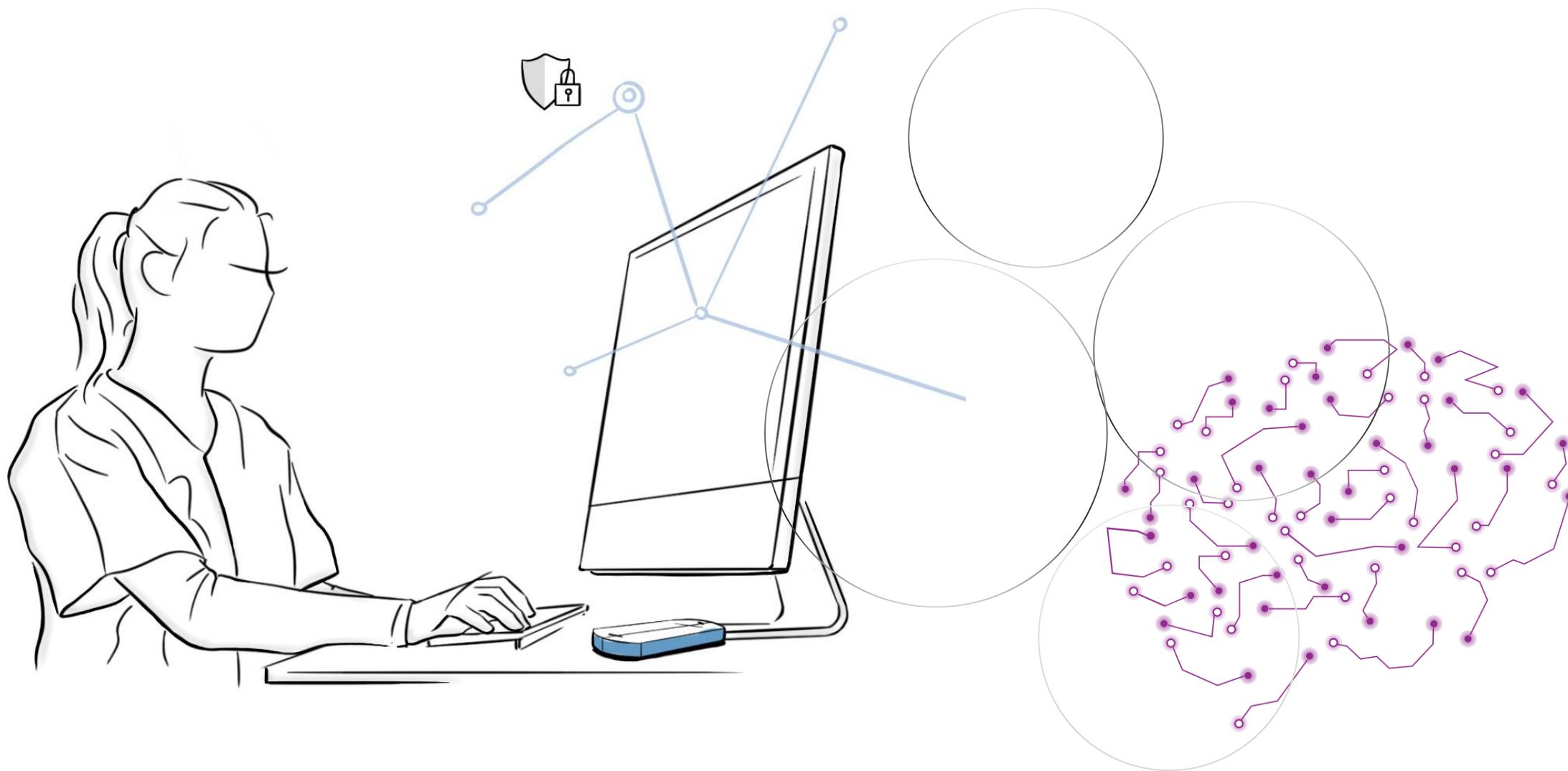


Vlaanderen
is ondernemen





All of this data characterizes an individual patient

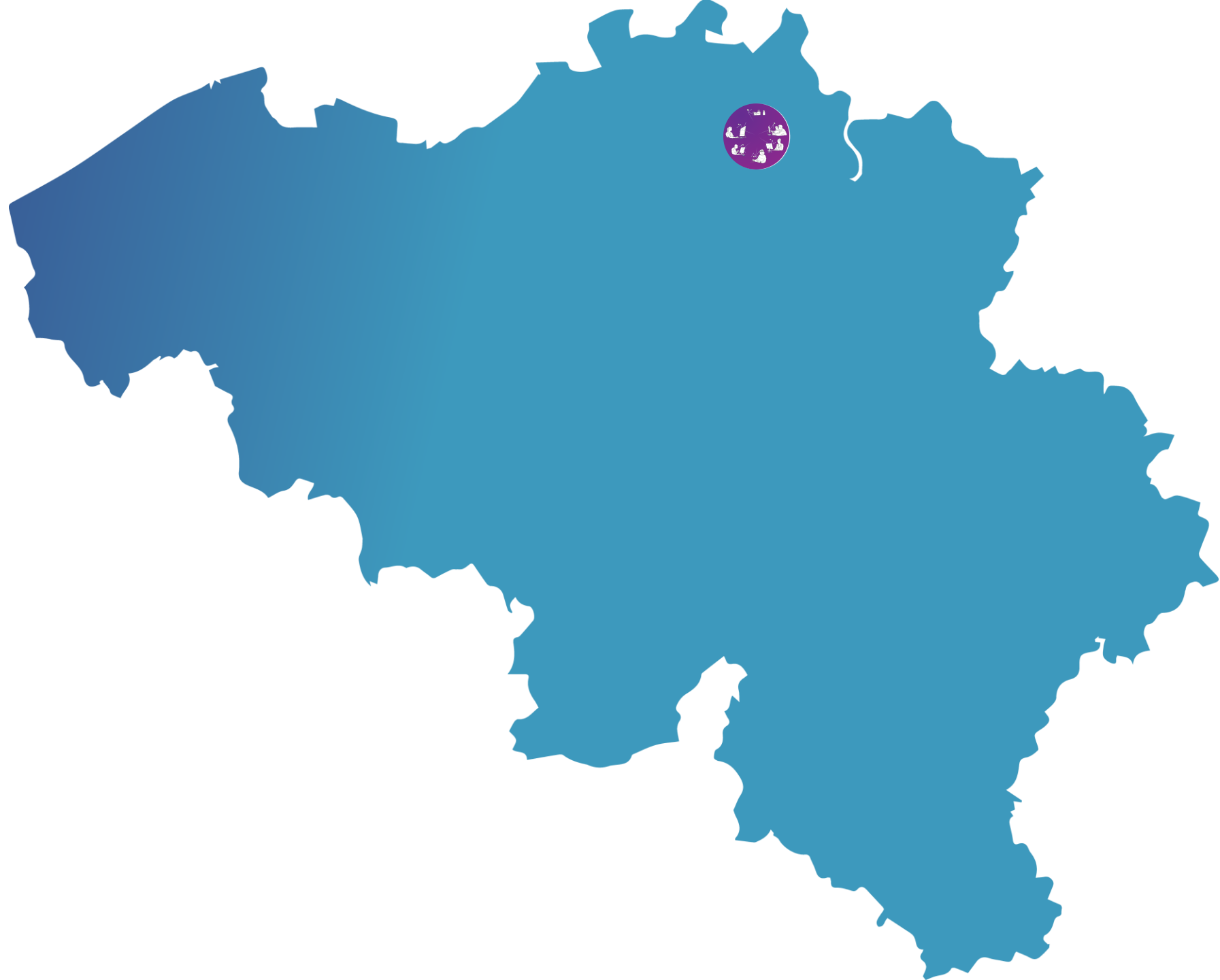


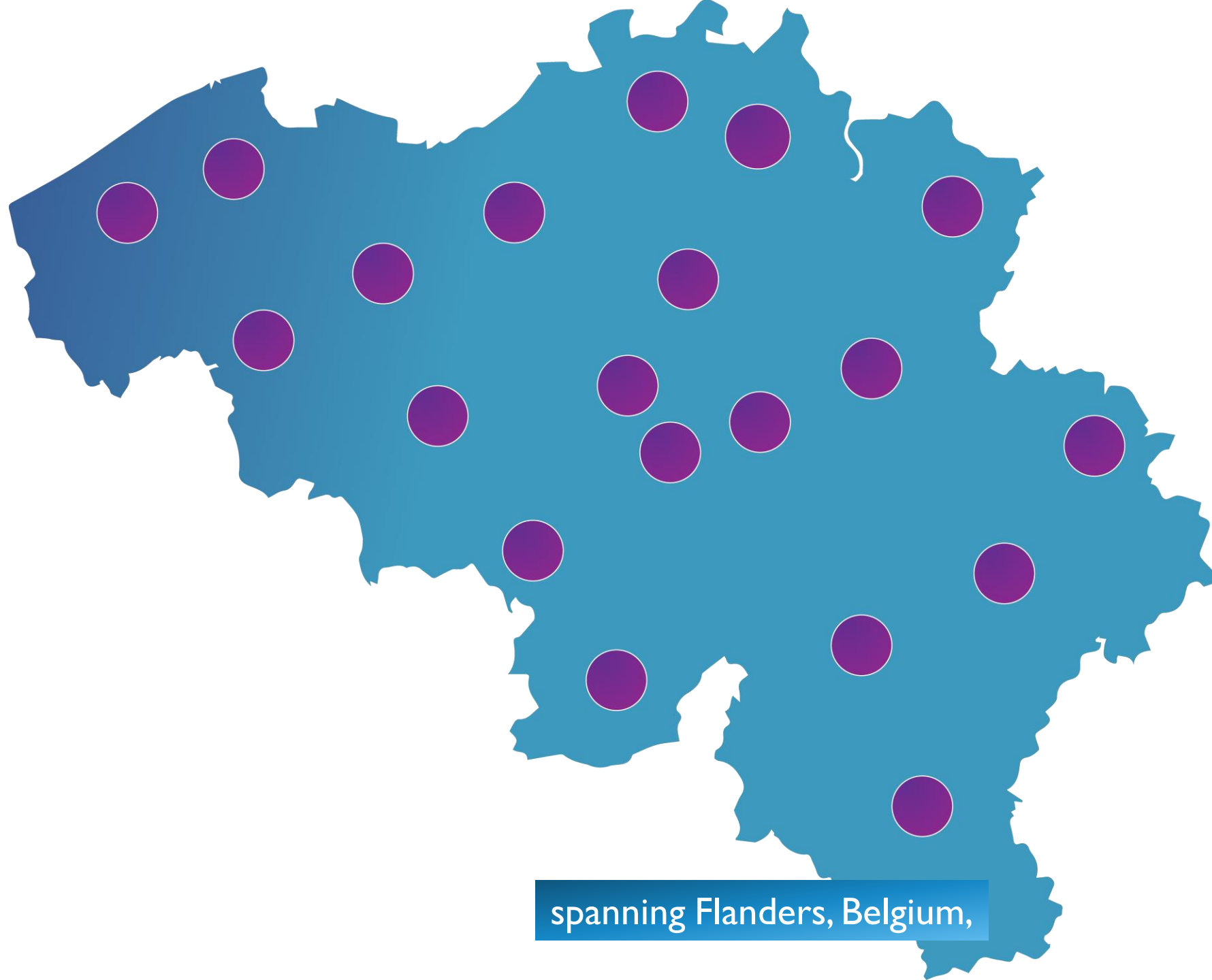
Decision support systems use all of this data



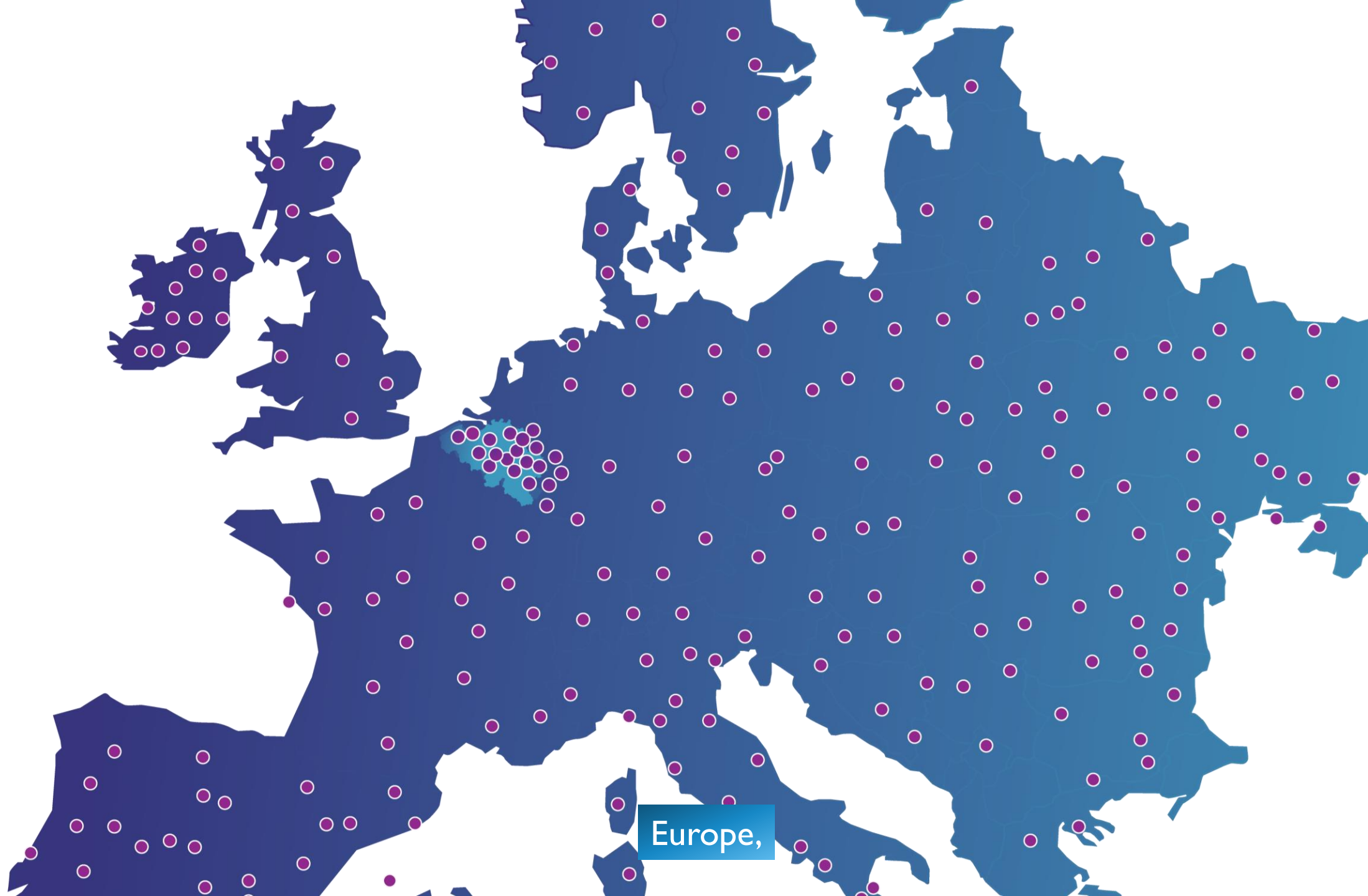
.... But even more data is available across multiple parties







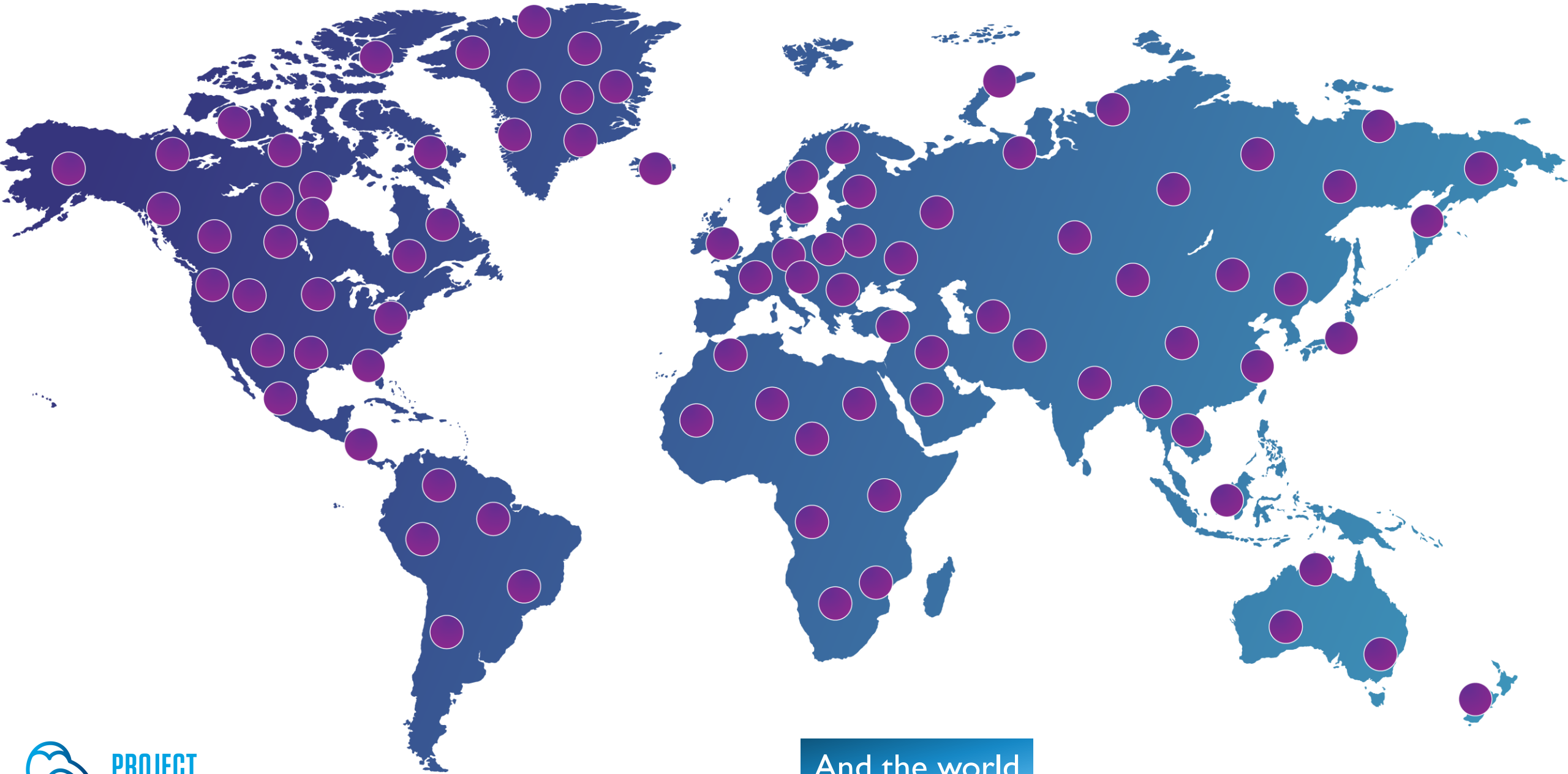
spanning Flanders, Belgium,



Europe,



PROJECT
ATHENA



A light blue world map is centered in the background of the slide. The word "challenges" is written in a dark purple, lowercase, sans-serif font, positioned in the center of the map.

challenges



technological

legislative

challenges

ethical

medical

cultural

Michel Van Speybroeck

Director Data Sciences
Janssen Pharmaceutica

André Dekker

Professor of Clinical Data Science
Maastricht University,
MAASTRO Clinic